

Verde Watershed Issues

An aerial photograph showing a large suburban residential development in a valley. The houses are arranged in a grid-like pattern with winding roads. There are several green spaces and a small blue pond. In the background, there are rolling hills and mountains under a clear blue sky.

**International Right of Way Association
September 12, 2008**

SEP 6 2008

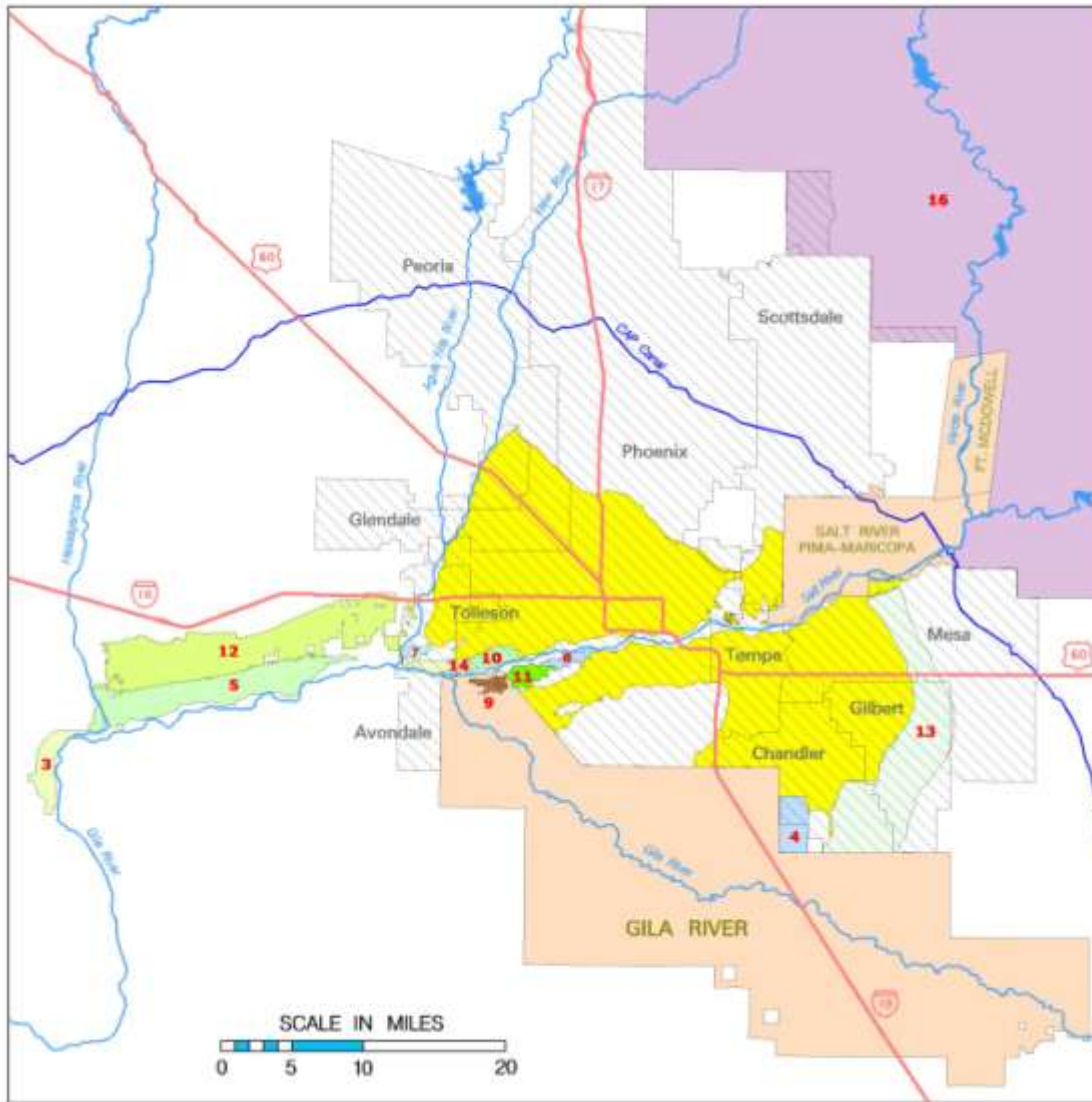
Salt River Project

◆ **Salt River Valley Water Users Association**

- ✓ **Established in 1903**
- ✓ **~ 400 sq. mi. service territory**
- ✓ **> 620,000 shareholders**
- ✓ **~1 million acre feet of annual deliveries**

◆ **Salt River Project Agricultural Improvement and Power District**

- ✓ **Established in 1937**
- ✓ **Electric service area 2,900 sq. mi.**
- ✓ **~825,000 electrical customers**



Salt River Valley Water Users' Association and Contract Lands

- Salt River Valley Water Users' Association
 - Cities
 - Indian Reservations
- 1 ADOT (Salt and Verde Watershed)
 - 2 Arizona Water Banking Authority (Statewide)
 - 3 Arlington Canal Company
 - 4 Bogle Farms
 - 5 Buckeye Water Conservation District
 - 6 CAWCD (Maricopa, Pima, Pinal Counties)
 - 7 Lakin Cattle Co.
 - 8 Maricopa Garden Farms
 - 9 Maricopa Indian Lands, Haggard Decree
 - 10 New State Irrigation District
 - 11 Peninsula Horowitz Irrigation District
 - 12 Roosevelt Irrigation District
 - 13 Roosevelt Water Conservation District
 - 14 Saint Johns Irrigation District
 - 15 San Carlos Reservation (Phelps Dodge)
 - 16 Tonto National Forest

Salt River Project

◆ **Normal flow - Kent Decree Rights**

- ✓ **151,000 acres (825,000 acre-feet)**

- ✓ **1869 to 1909**

◆ **Stored flood waters**

- ✓ **6 reservoirs (2.3 MAF)**

- ✓ **1893 to 1910**

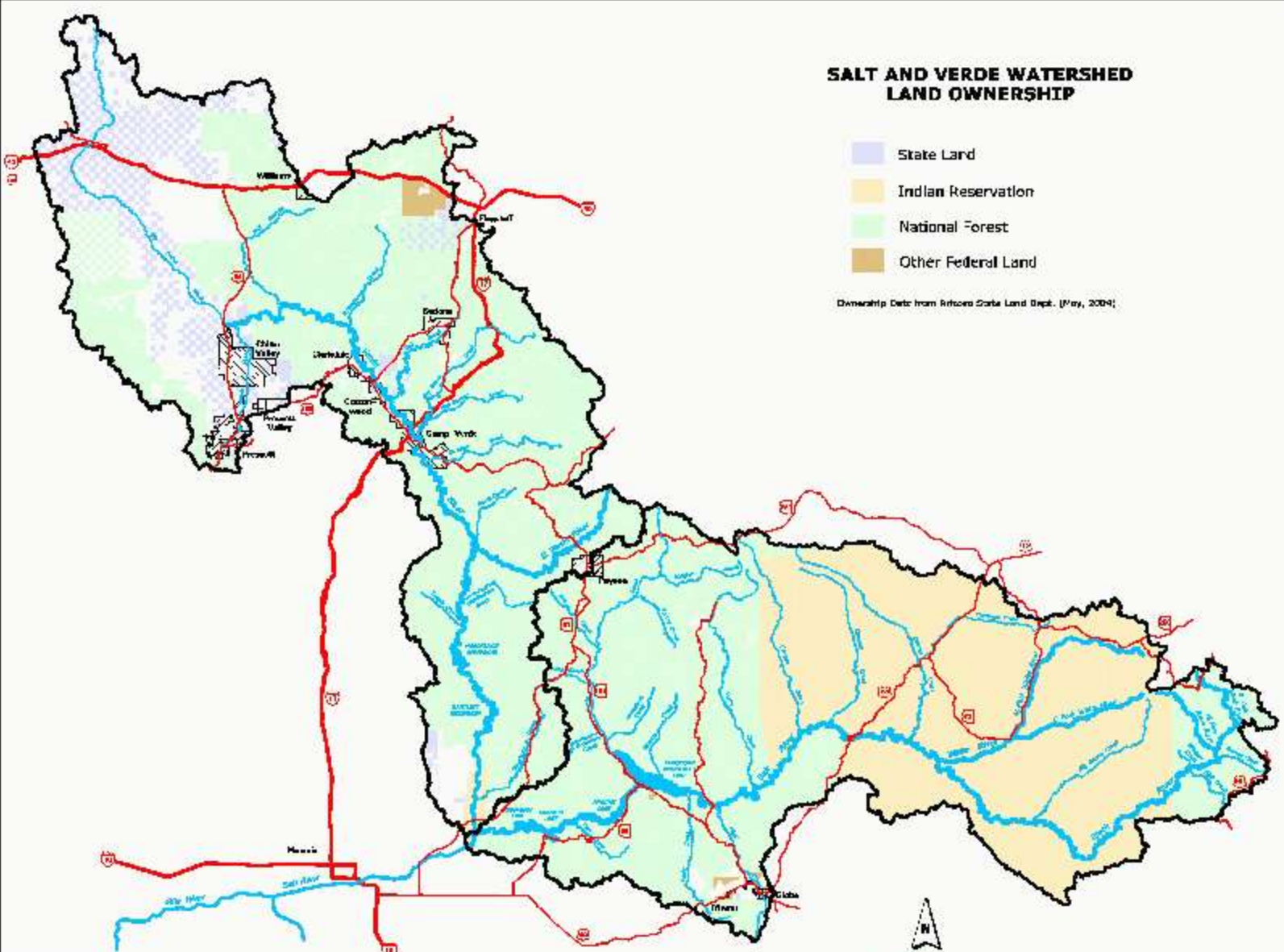
C.C. Cragin (Blue Ridge) Reservoir



SALT AND VERDE WATERSHED LAND OWNERSHIP

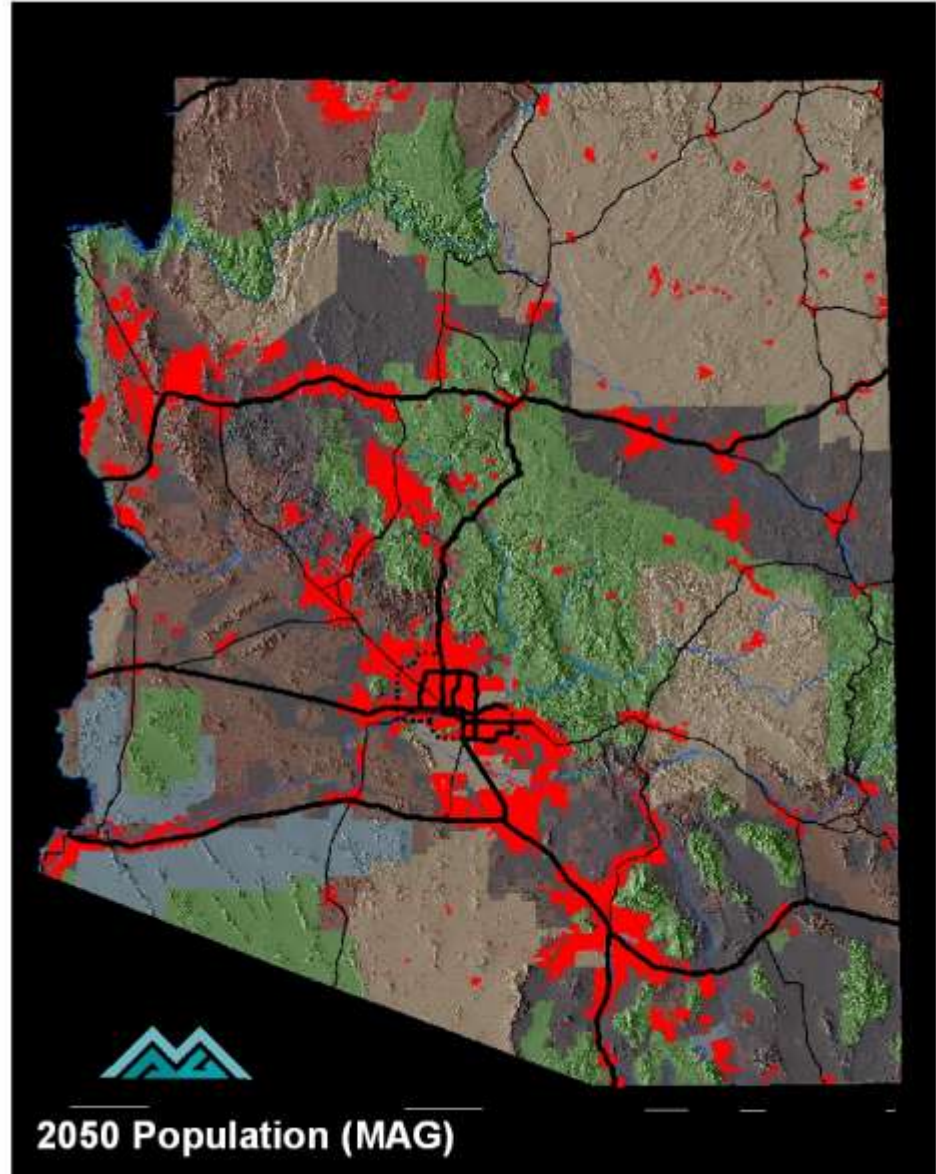
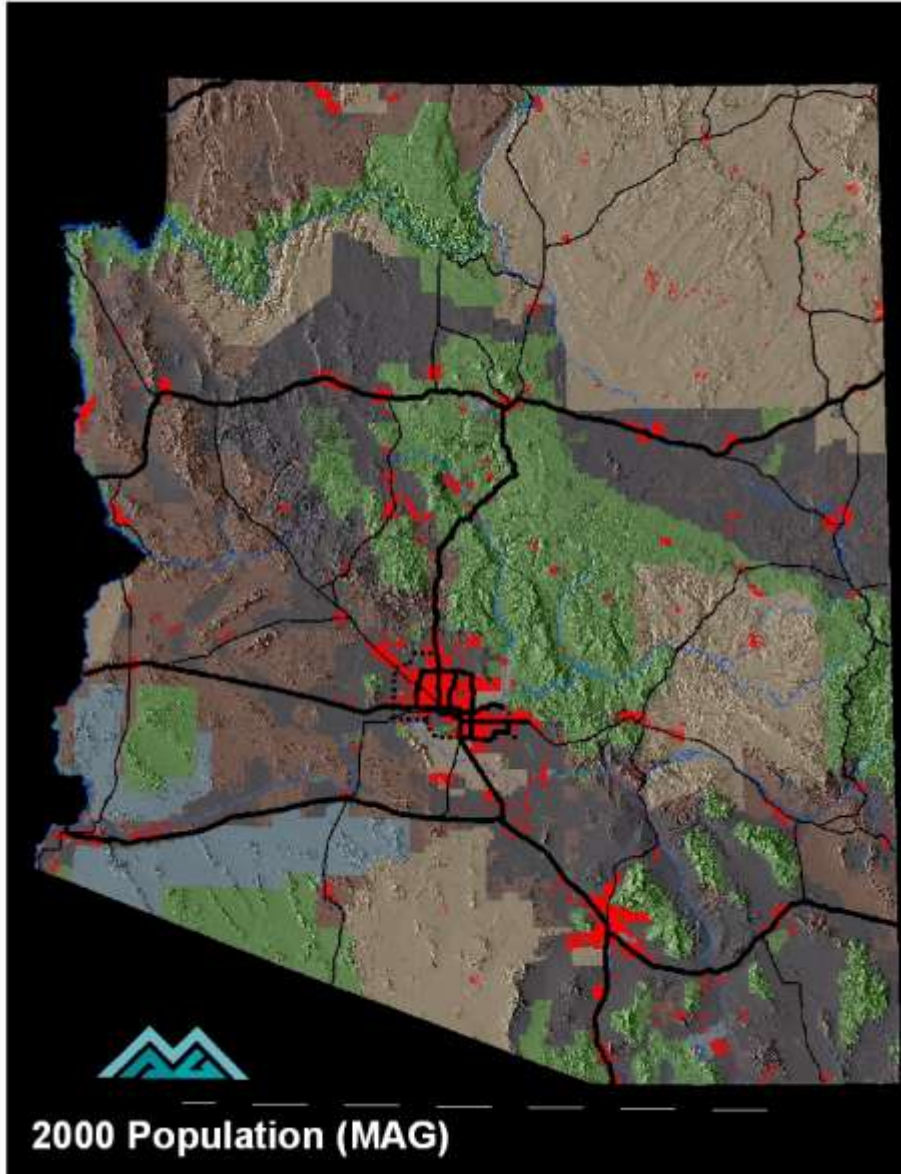
- State Land
- Indian Reservation
- National Forest
- Other Federal Land

Ownership Data from Arizona State Land Dept. (May, 2004)

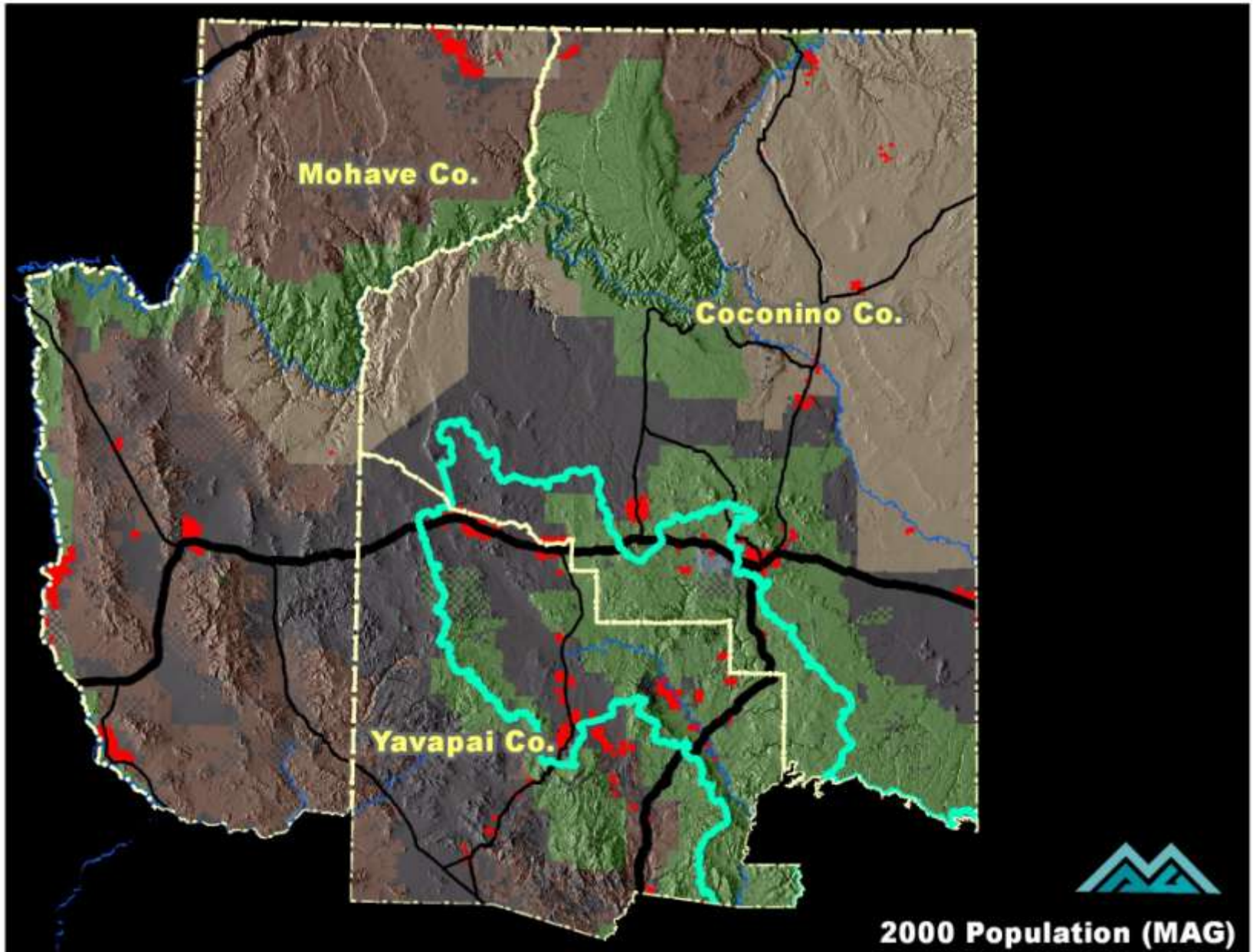


Cartographic © GIS Services
 2004 by GIS Services, Inc.

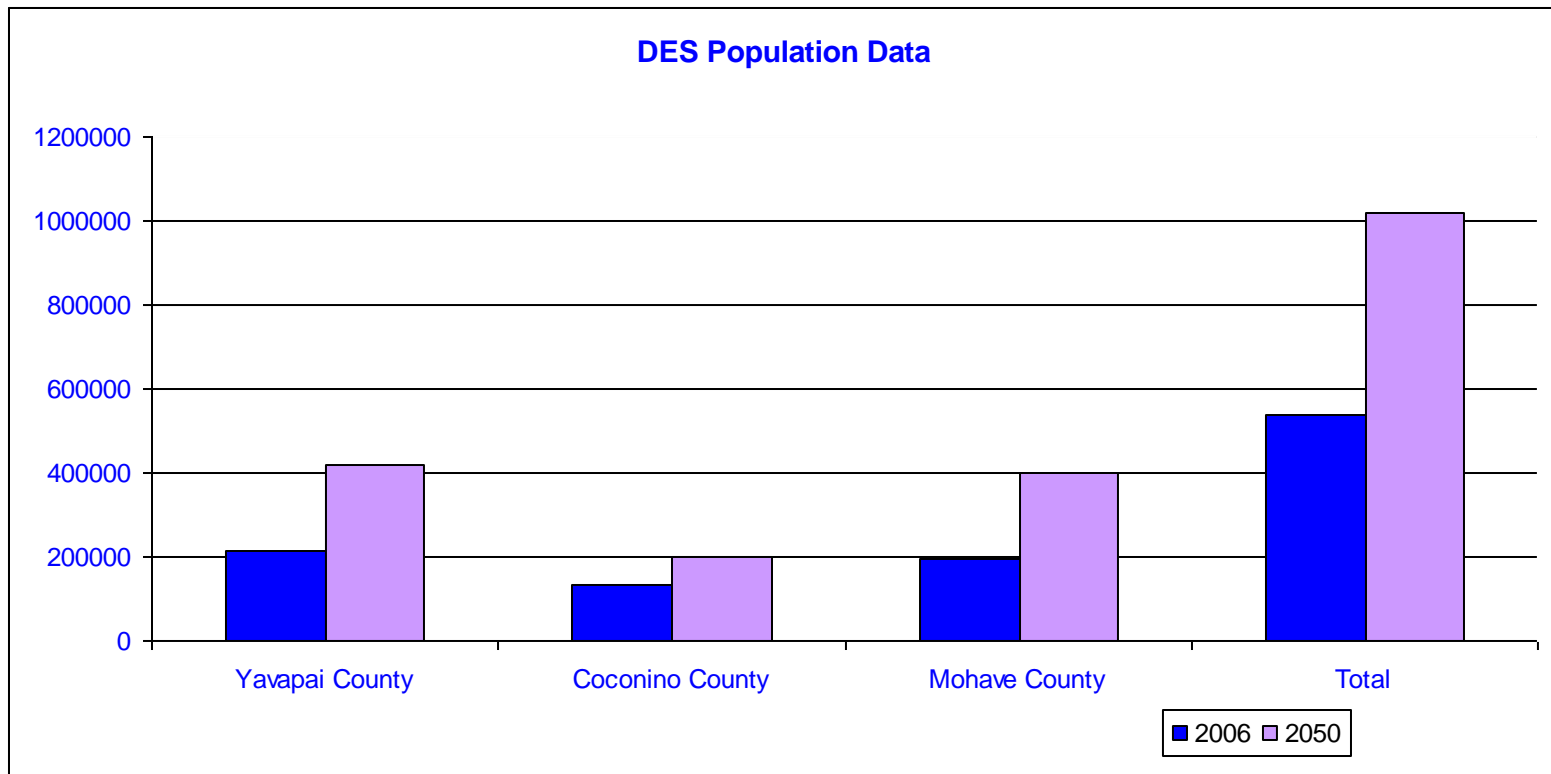
Verde Watershed Issues



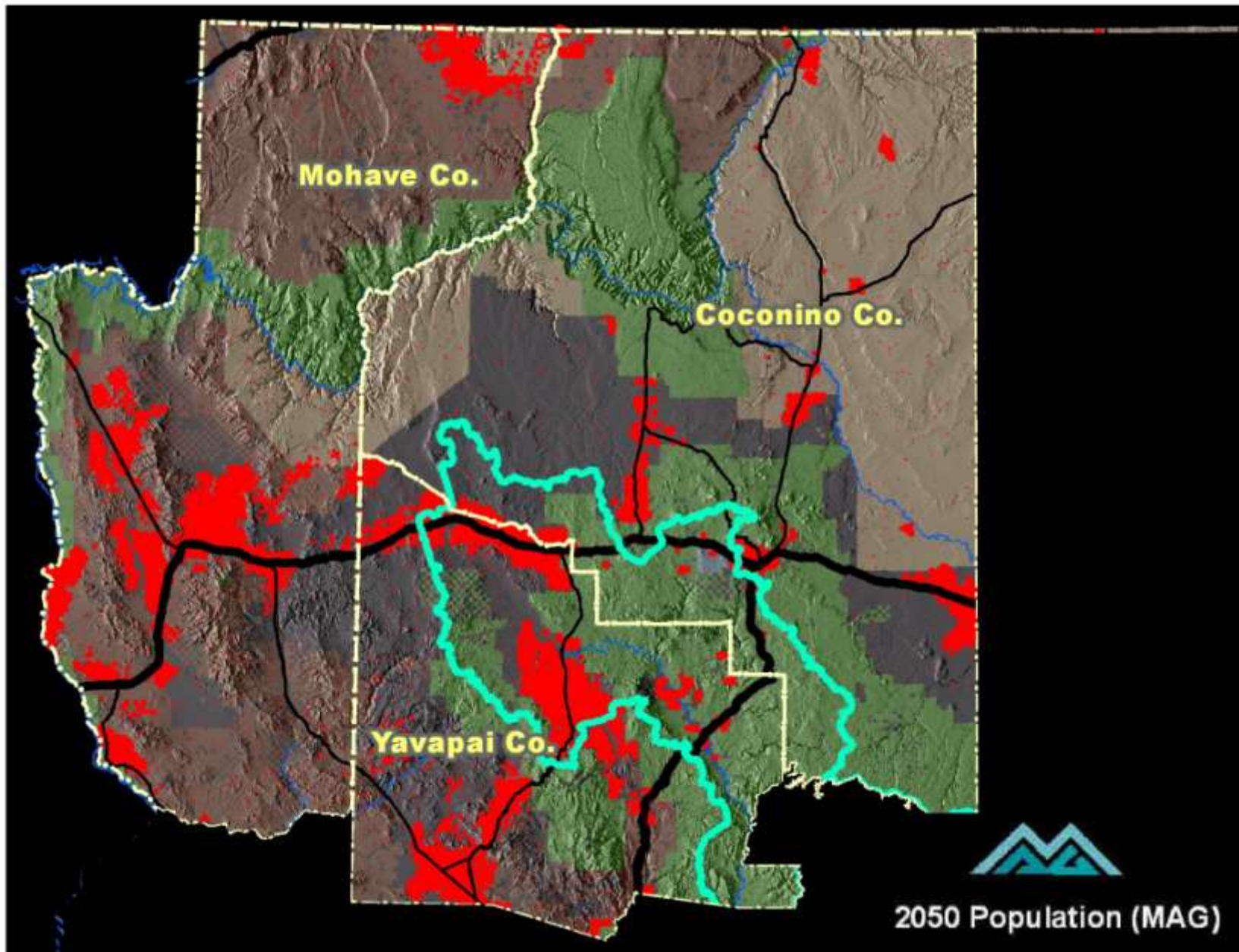
Verde Watershed Issues



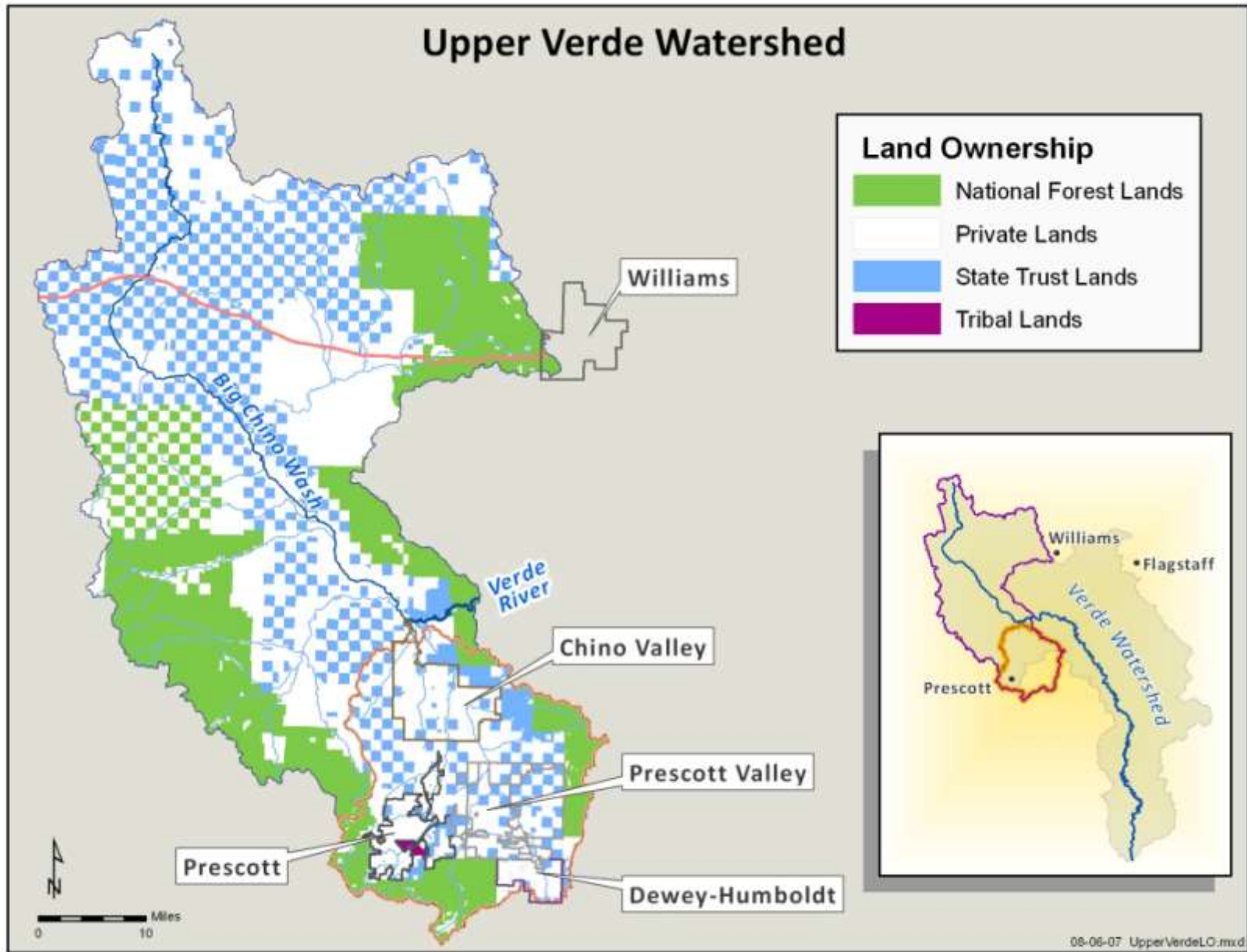
Verde Watershed Issues



Verde Watershed Issues



Verde Watershed Issues

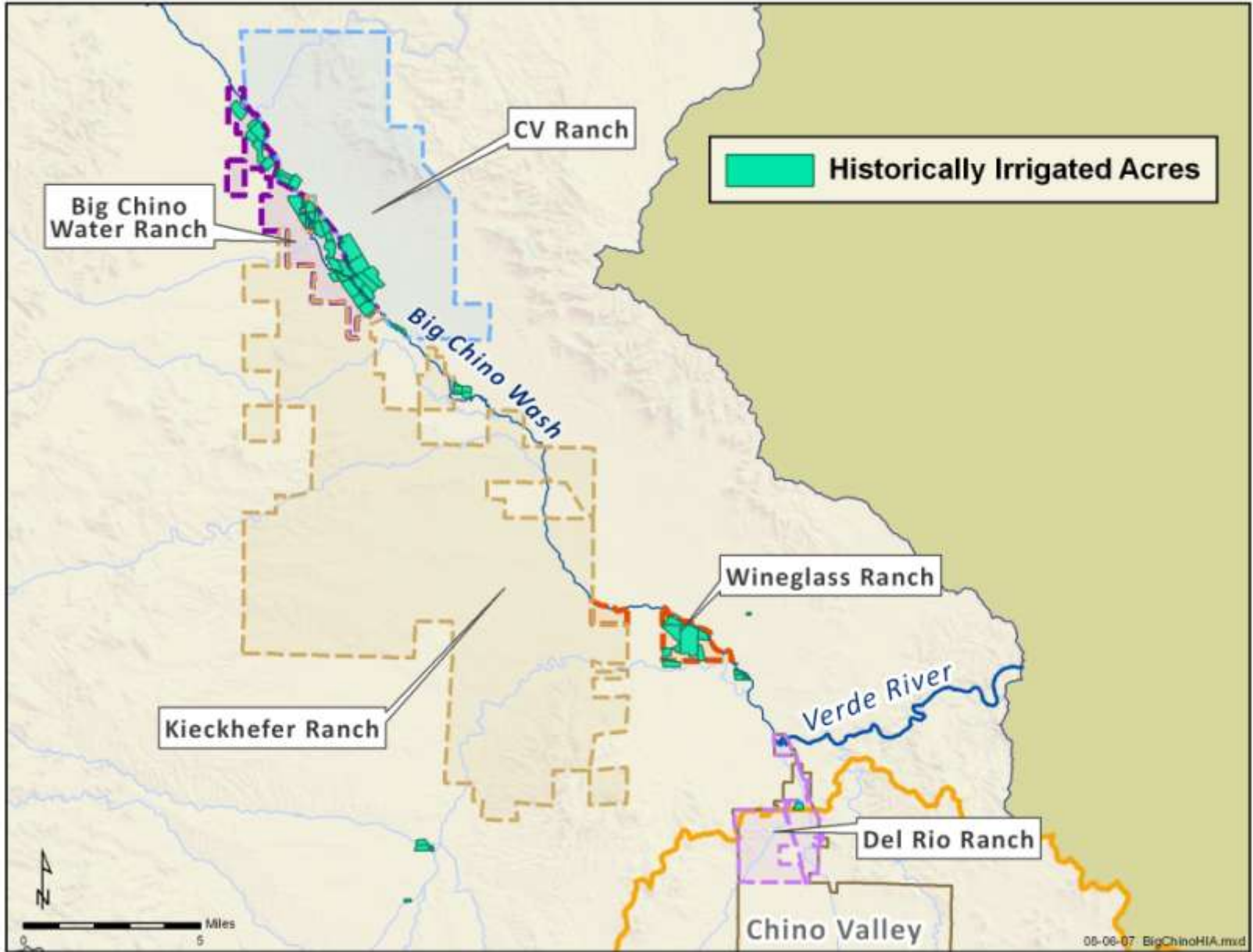


Verde Watershed Issues

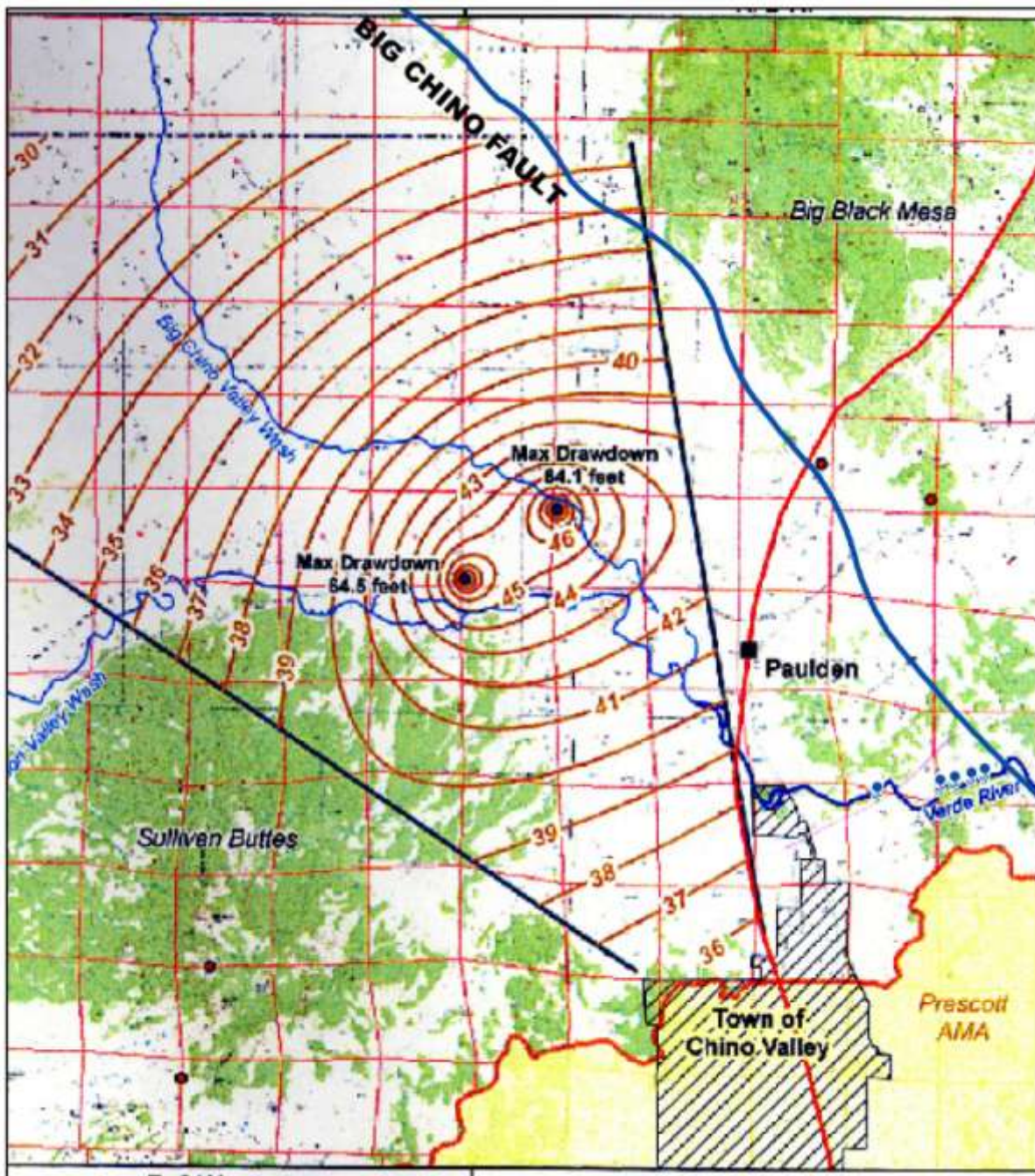
Big Chino Sub-Basin Water Transfer

- ◆ **State law permits out of basin transfers to Prescott AMA**
 - ✓ **3 af/ac associated with historically irrigated farm land (HIA lands) by cities or towns (HIA water)**
 - ✓ **Up to 14,000 af/yr by Prescott (Exemption water)**
- ◆ **Current transfer plans**
 - ✓ **Prescott (sale to Prescott Valley) – up to 12,400 af/yr from Big Chino Water Ranch**
 - ✓ **Chino Valley – up to 8,000 af/yr from Wineglass Ranch (Chino Grande LLC agreement)**

Verde Watershed Issues

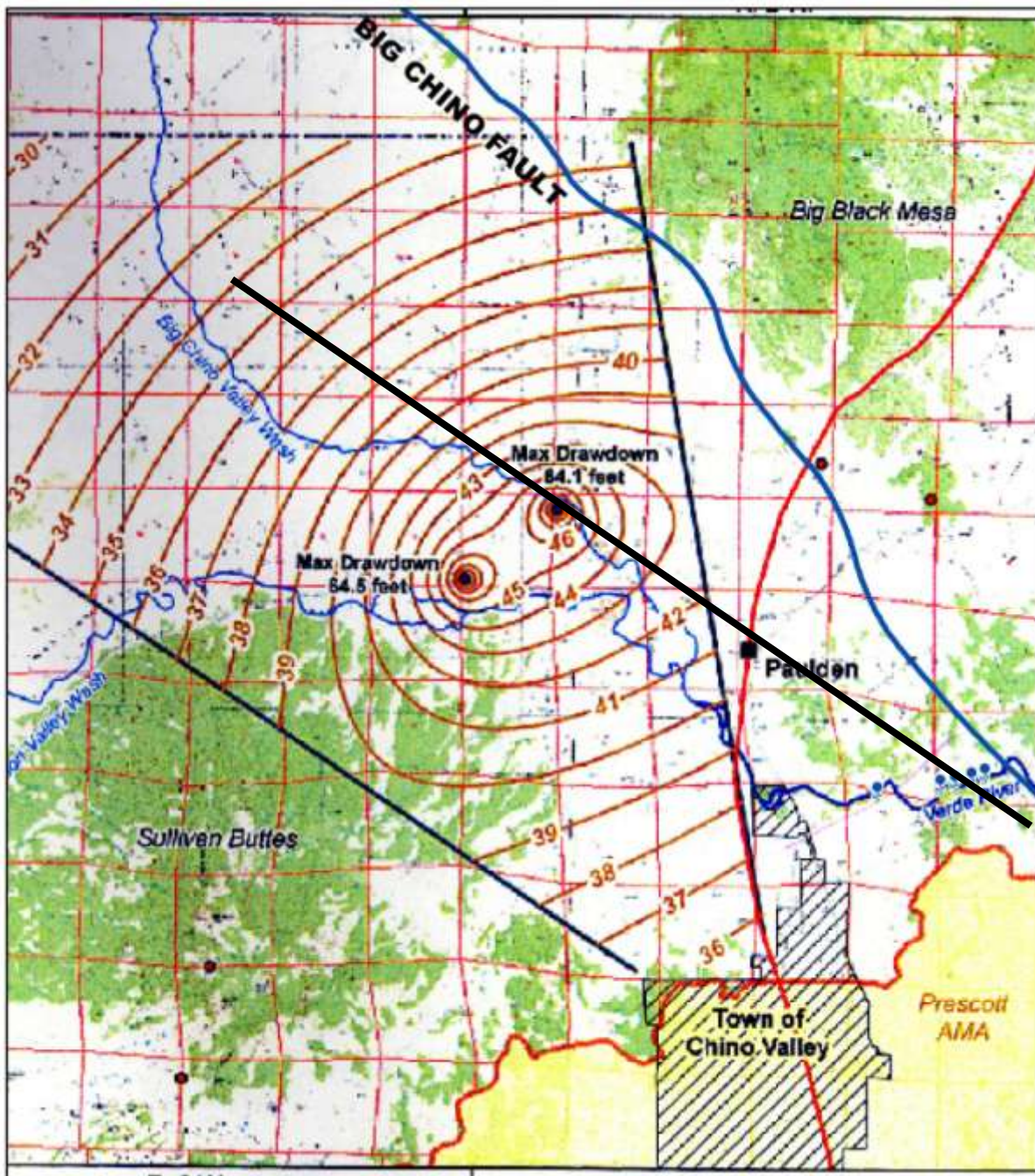


Verde Watershed Issues



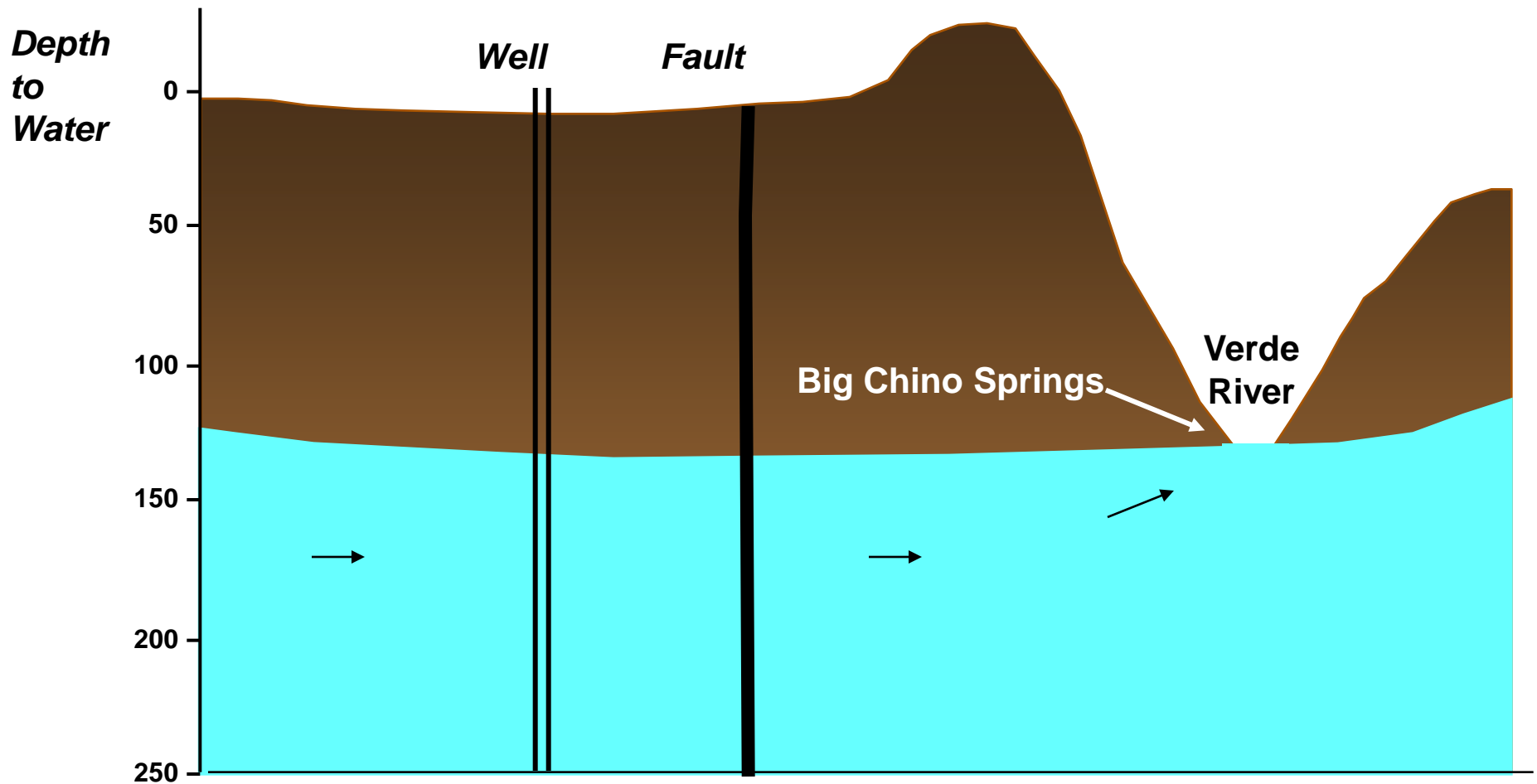
*Chino Valley
Groundwater
Modeling Report
for Application for
Analysis of
Groundwater
Availability*

Verde Watershed Issues

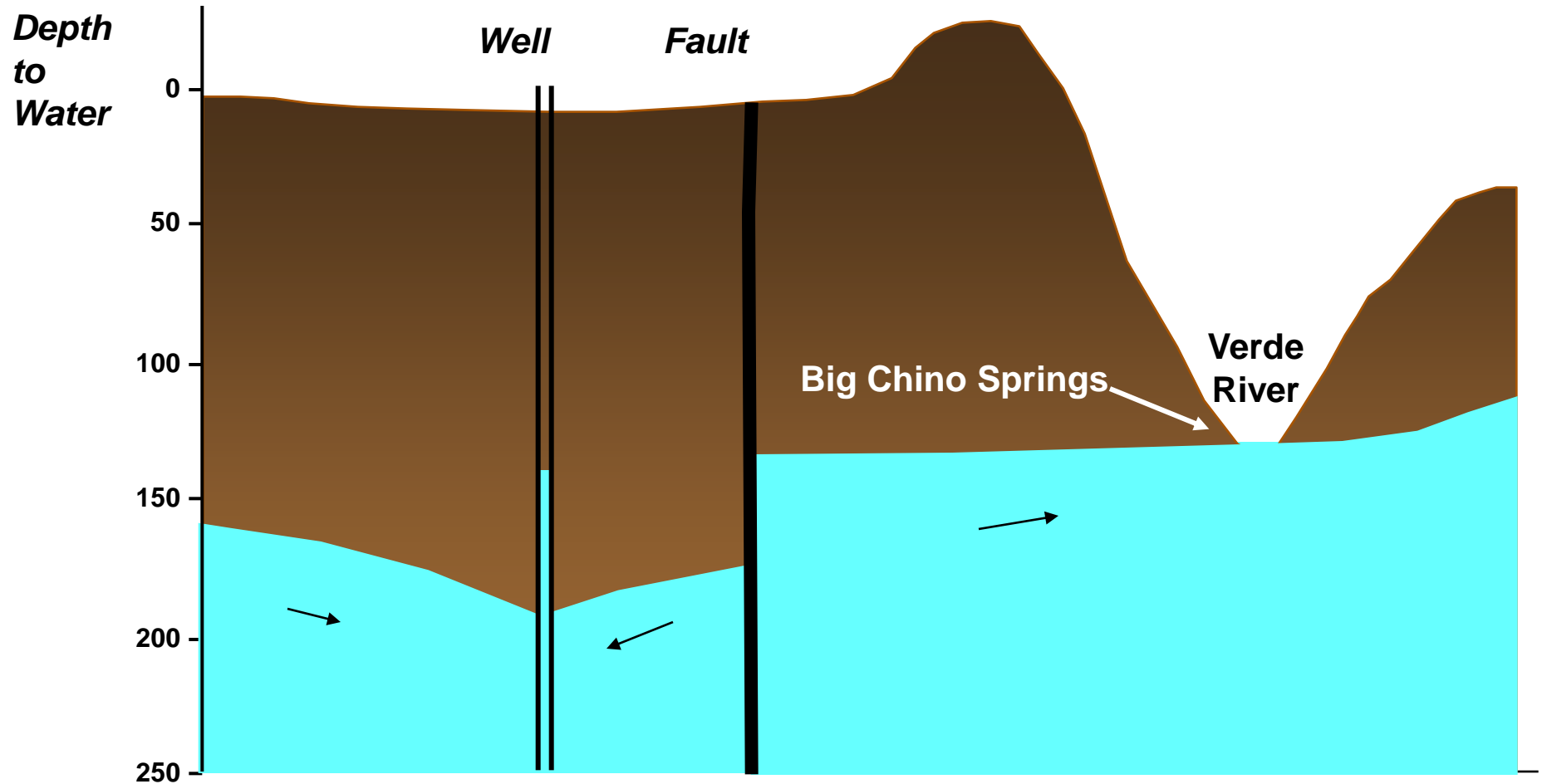


*Chino Valley
Groundwater
Modeling Report
for Application for
Analysis of
Groundwater
Availability*

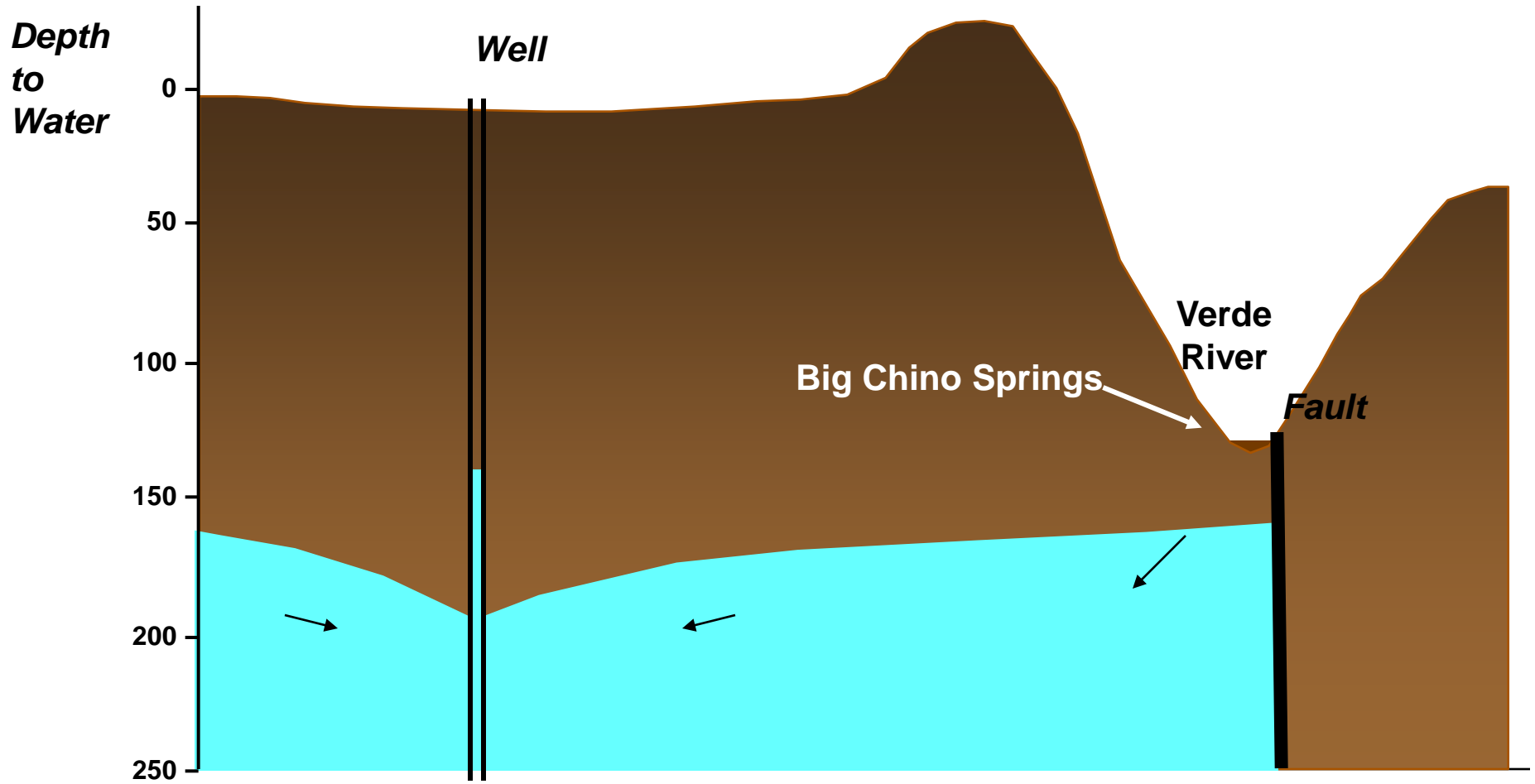
Verde Watershed Issues



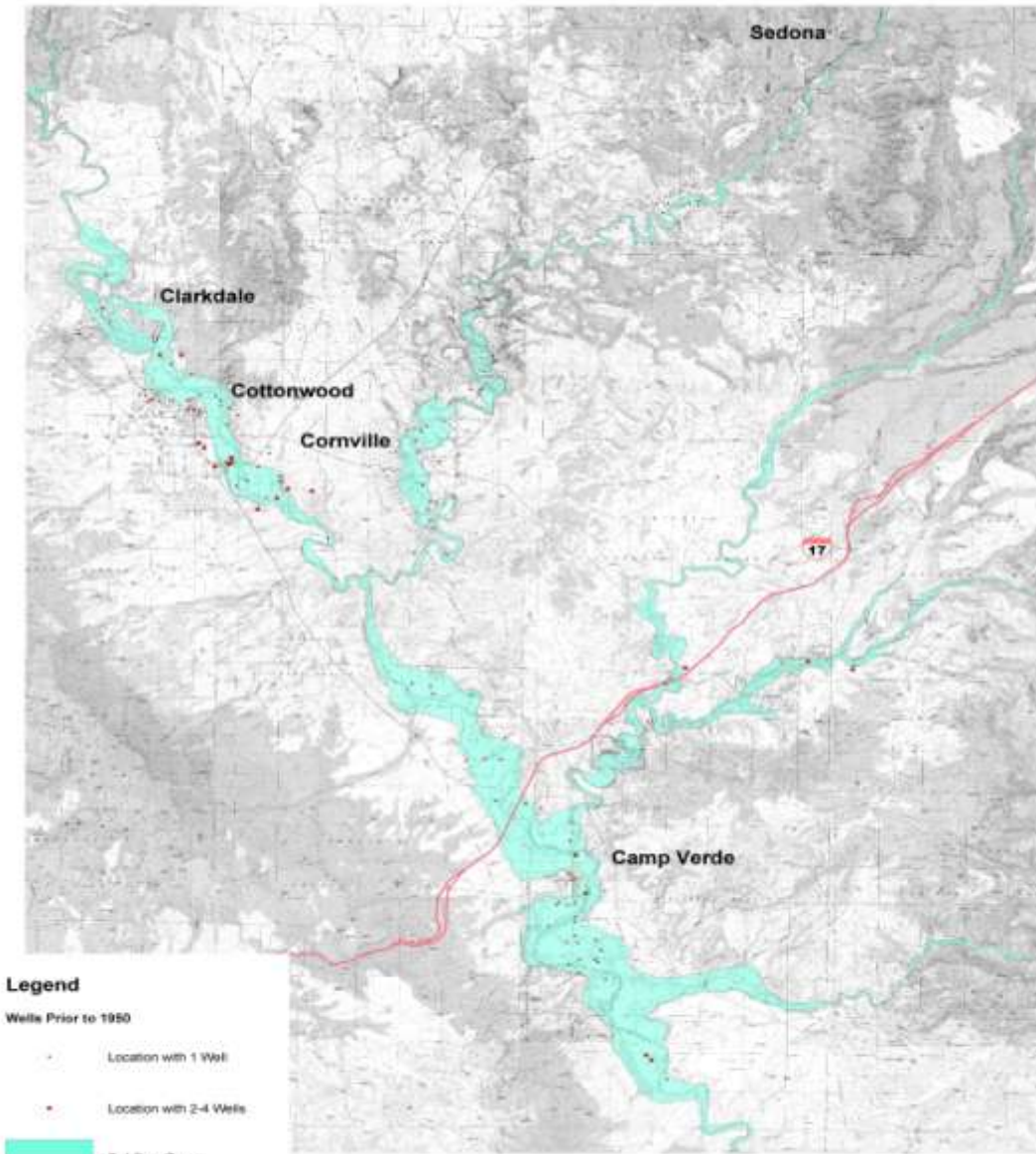
Verde Watershed Issues



Verde Watershed Issues



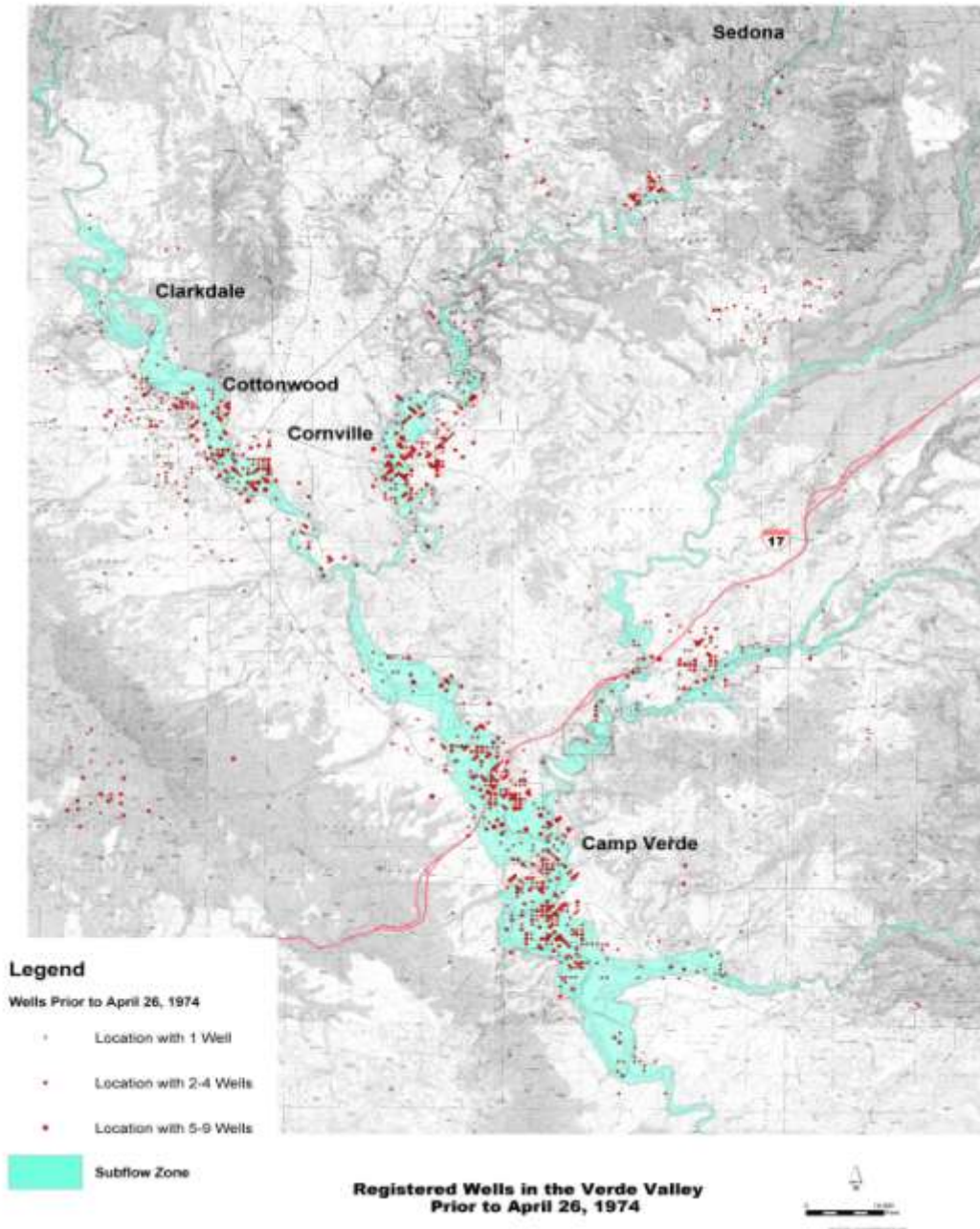
Verde Valley Wells as of 1950: 190 Wells



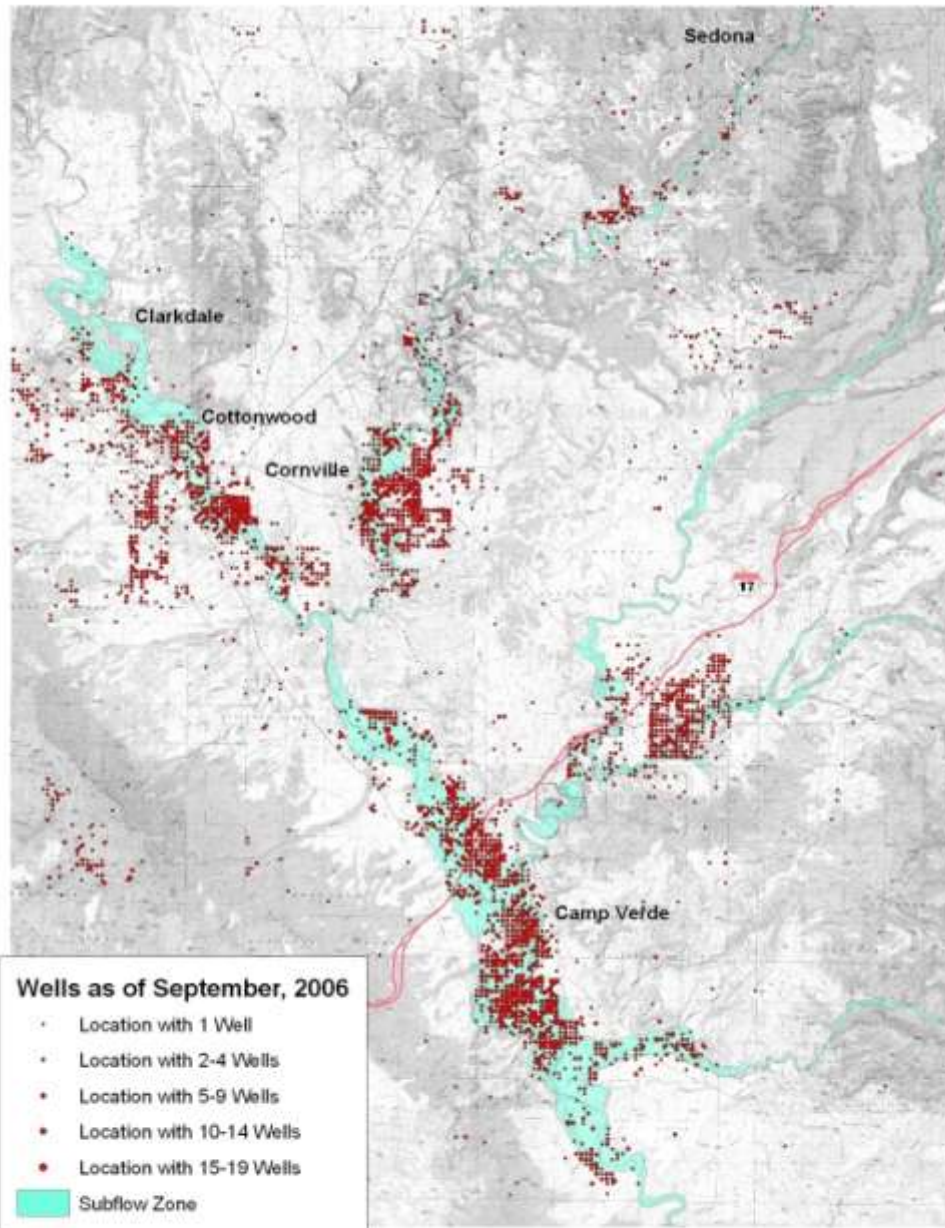
Registered Wells in the Verde Valley
Prior to 1950



Verde Valley Wells as of 1974: 1,900 Wells



Verde Valley Wells as of 2006: 6,300 Wells



**Registered Wells in the Verde Valley
as of September, 2006**



Verde Watershed Issues

Verde Valley Orders to Show Cause

◆ Nine cases filed in April 2004

✓ Three resolved

- Shield Ranch – injunction in favor of SRP
- Leslie – settlement agreement
- Verde River Ranch – settlement agreement

✓ Three in settlement discussions

- River Ranch Estates, Robinson and Chester-Campbell

✓ Trial delayed

- Kovacovich
- Wiertzema
- NBJ Ranch

Verde Watershed Issues

Shield Ranch Inc.



- Approximate parcel boundary**
- Irrigated areas without historic water right**

Photo Date: August 30, 2004

Verde Watershed Issues



Verde River Ranch, LLC
and
Squaw Peak Ranch, LLC
Severance and Transfer

Exhibit B

- Receiving Water Right
- Severed Water Right
- Property / Assessor Parcel Boundaries



NE4 Section 28 T13N R5E
Photo date August 30, 2002

Verde Watershed Issues

Alcantara Vineyard



Verde Watershed Issues



Futral

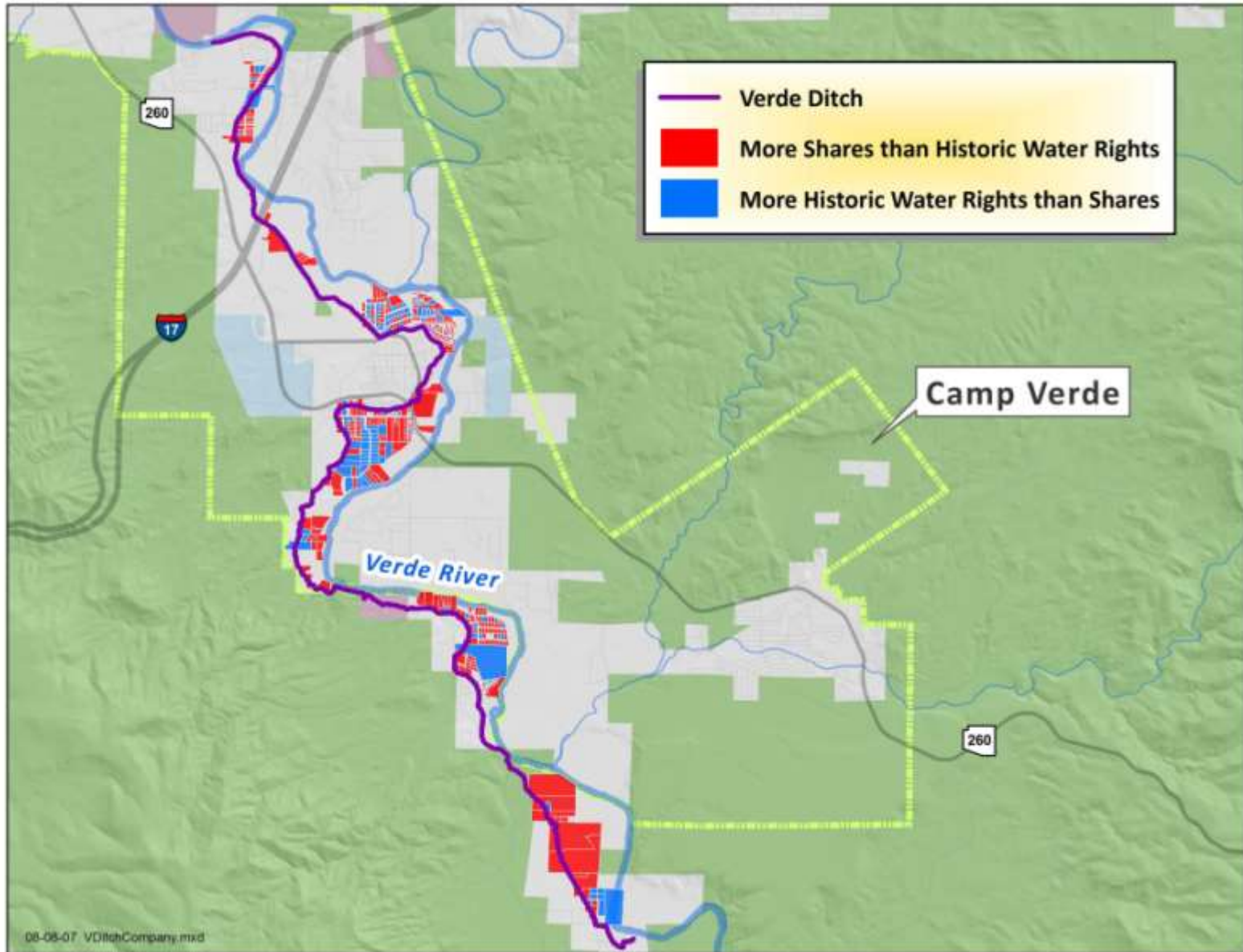
Verde Watershed Issues

Simonton Ranch

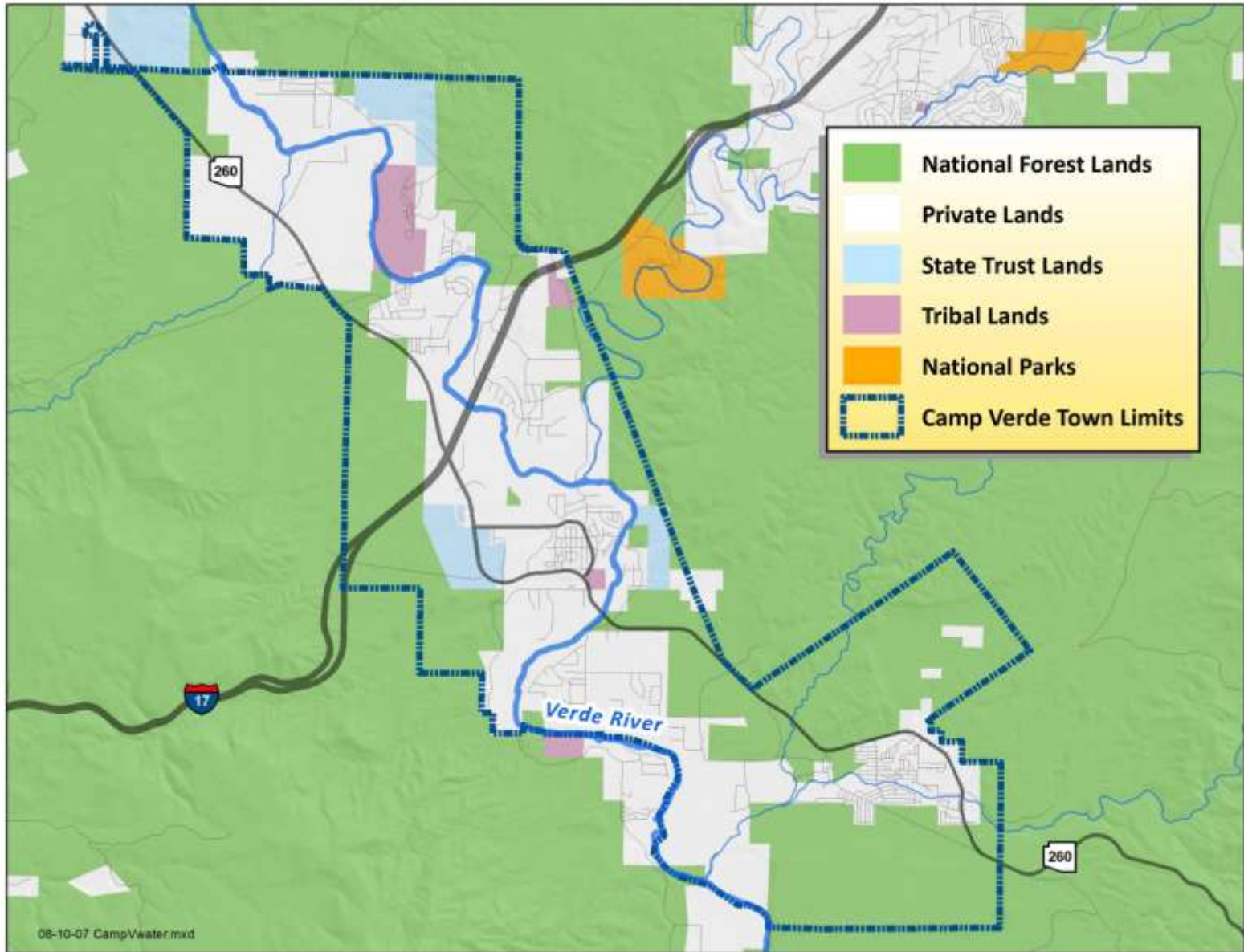


Sept. 8, 2006

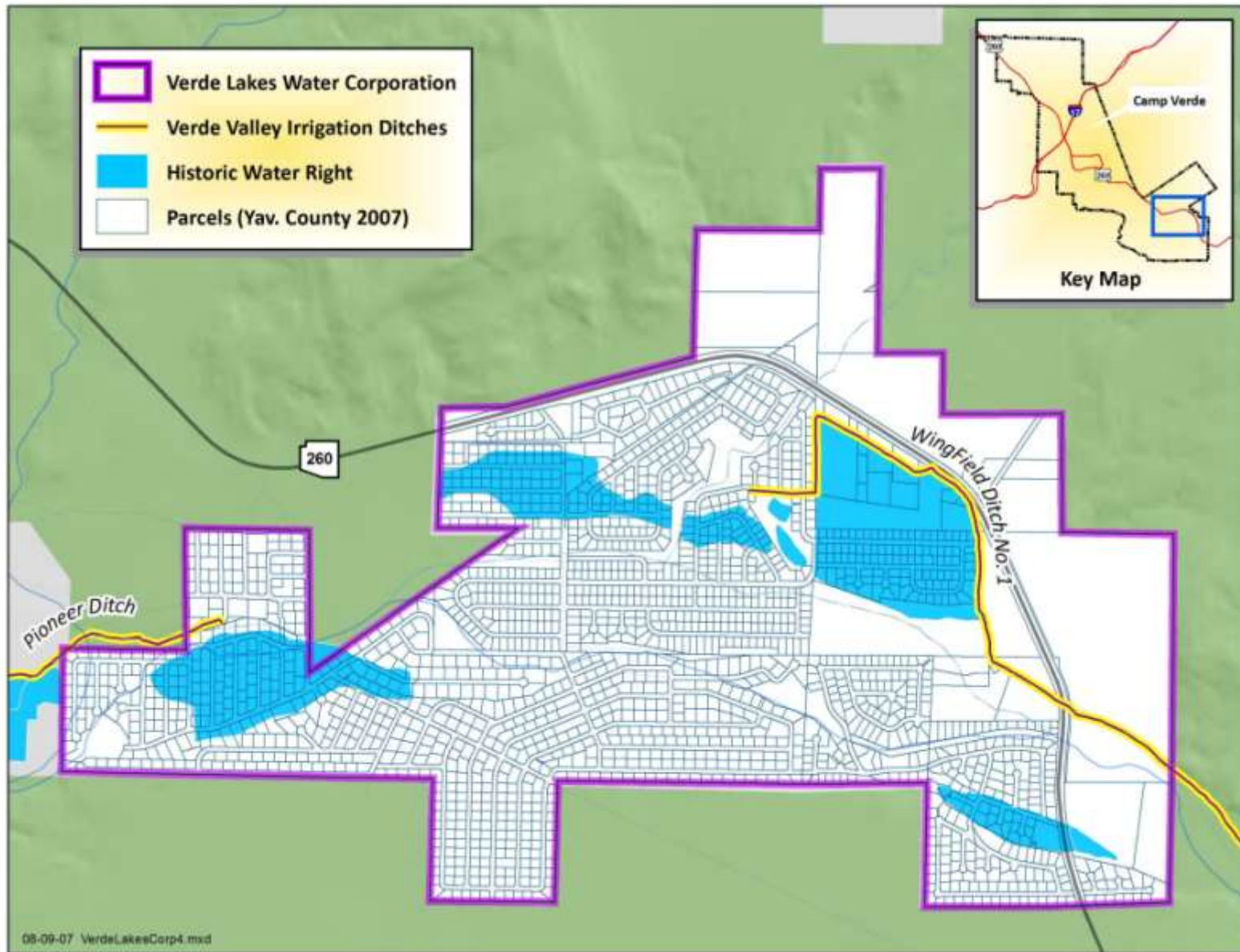
Verde Ditch Company



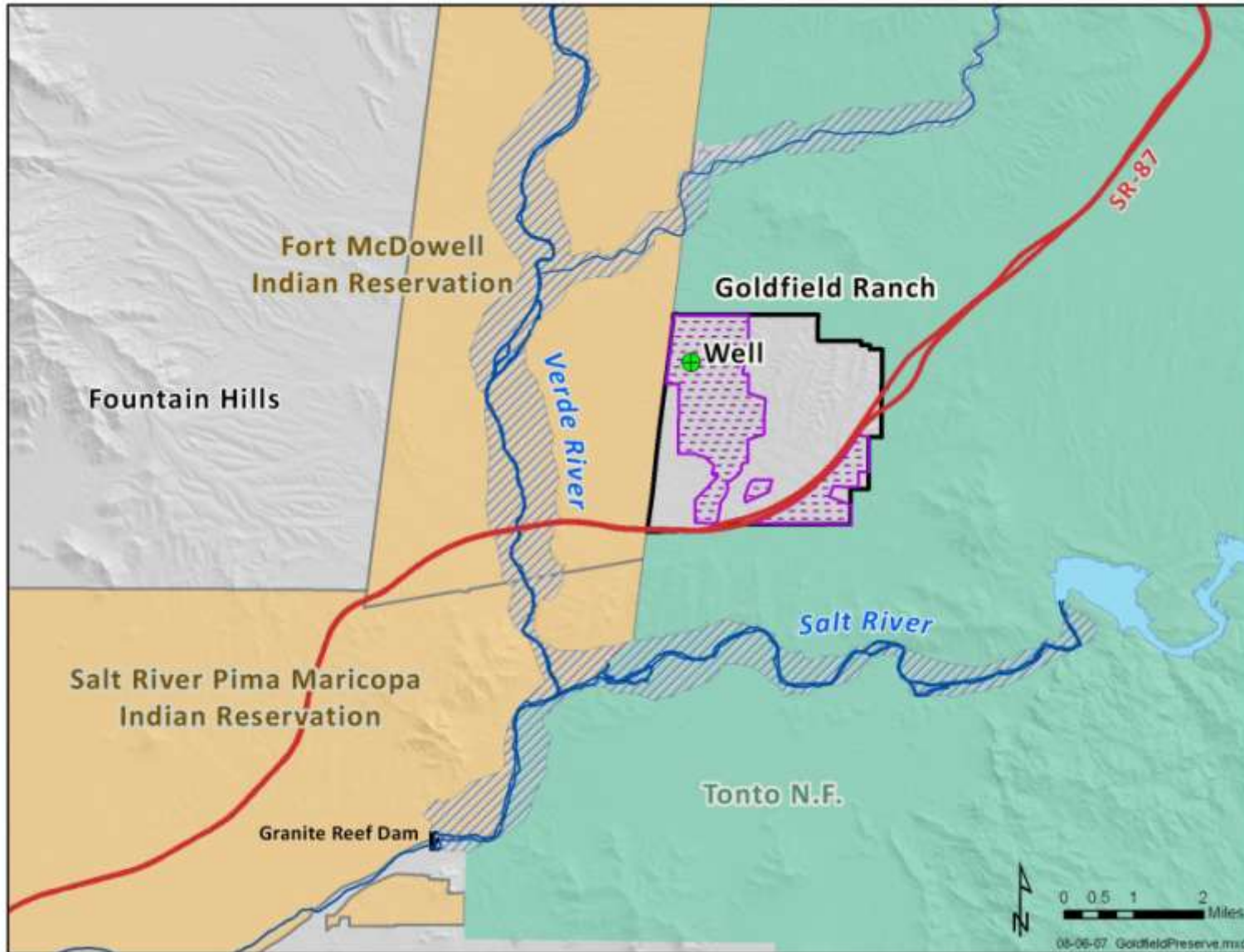
Town of Camp Verde



Verde Lakes Water Company



Verde Watershed Issues



Questions?