



# Kachina Chapter 28, Newsletter

March, 2009

## Inside this issue:

President's Message	2
New Members, Meeting	3
50th Anniversary article	4
Submitted by Mark Keller	5
Education	6
Calendar	7
Top 10 IRWA Projects	8
- METRO Light Rail #7!!!	9
Interest Article	10
Job Board	11

## 2009 Kachina Chapter Executive Board

### President

Kathie Sholly, SRWA  
623.930.3652

President@irwachapter28.org

### President Elect

Karen Williams, SRWA  
602.542.8857

karen.williams@azag.gov

### Secretary

Mary Smith

602.682.0000 ext. 309

msmith@tierra-row.com

### Treasurer

Jason Foster

602-328-1959 (83-1959)

602-809-3217

jason.foster@aps.com

### International Director

Doug Estes, MAI, SRWA

480.345.4111

dougest@hotmail.com

### PDC Chair

Lisa Amos, SRWA

Office: 602-506-4747

lla@mail.maricopa.gov



## IRWA's 55th Annual International Education Conference

**Indianapolis, Indiana**

**June 28 - July 1**

Each year, IRWA's Annual International Education Conference provides right of way professionals with unparalleled learning and networking opportunities.

With typically more than 1,000 registrants, attendees have the opportunity to learn about best practices, share project challenges and hear solutions from the industry's leading professionals.

### **Earn Recertification Credit**

Did you know that IRWA members can get up to 24 hours of SRWA Designation and Certification Program recertification credit for attendance at the Annual International Education Conference?

[www.irwaonline.org](http://www.irwaonline.org)

**to register and for more information!**

# Presidents Message

Happy St. Patrick's Day! Happy International Women's Day! Happy Birthday, Dr. Seuss! And Happy anything else that March may bring your way.

The February 10, 2009 Chapter 28 Member meeting and luncheon was extremely successful, with nearly 80 in attendance. Several of you sent emails or called afterward to praise the location, the meal, the speaker ... it seems that nearly everyone found something good to comment on. I was pleased to see that, not only were some of our "long time" members in attendance, there were a lot of fresh new faces. It was good to meet some of our newest members, and I appreciate you taking the time to introduce yourselves and shake my hand.

Many of you commented positively about our speaker, Bryan Perry of the Arizona Attorney General's office, and the topic (Eminent Domain 101). Please continue to let us know what you think of the Chapter 28 Member meetings and speakers. If you have suggestions for speakers or topics, don't hesitate to drop a line to [PresidentElect@IRWACHapter28.org](mailto:PresidentElect@IRWACHapter28.org) or contact any of the Board members.

The matter of realigning the IRWA Regions and shuffling the chapters within them continues to be a matter of concern to me. The Executive Board would really like to hear your thoughts on the matter.

Imagine that, one day, you hear that your neighborhood will no longer be part of Arizona, but will be given to, let's say, New Mexico. You and your immediate neighbors will be encouraged to fulfill all of your future educational needs in New Mexico, to learn the different laws, customs and culture of New Mexico, and to sever ties with people – with whom you have built professional and personal relationships – who happen to live outside of your neighborhood. It doesn't matter that you have more in common with the people who would remain a part of Arizona – the ones who live just a short distance away from you – than you have in common with the people of New Mexico, or that the majority of your business dealings are with those who live just outside your neighborhood. You wouldn't be given a say in the matter.

I believe this imaginary scenario is not terribly dissimilar from the proposal to move the IRWA Arizona chapters from Region 1 to Region "C". But I need to hear from you. Visit Chapter 28's website ([www.irwachapter28.org](http://www.irwachapter28.org)), click on the Region Re-Alignment link, read what's there, and then send me an email ([President@irwachapter28.org](mailto:President@irwachapter28.org)) with your comments.

Kathie A. Sholly, SRWA  
President  
[President@irwachapter28.org](mailto:President@irwachapter28.org)

## Welcome New Members



**Corey Long - Tierra Right of Way Services**

**Catherine Humphrey - Canyon Digital**



## Board and Member Meeting

**March 4, 2009 at 4.45pm**

Locations: SRP & ASL

~All are welcome to attend~



Please contact a Board Member or  
email the Secretary, Mary Smith for further details.

[Secretary@irwachapter28.org](mailto:Secretary@irwachapter28.org)

**In memoriam of Roger Price...** Lewis "Roger" Price. Roger Price, 58, passed away at home on January 29, 2009. He was born in Youngstown, OH on October 21, 1950 and his family moved to Phoenix, AZ in 1956. He lived in Glendale until October 2008 when he realized his dream to move to northern Arizona with his wife and best friend Susan. Roger graduated from Maryvale HS and was a member of UA Local 469 for the past 38+ years. He retired in 2001. Roger is also survived by his mother Violet, son David, step daughter Shannon and husband Ken, stepson Steven, grandsons Austin, Tyler, Cody, step grandchildren Kenny, Kole, Klayton, Konner and Cassidy, sisters Anne and husband Miles, Maribeth and Joan and nephews Michael and Matthew. A life celebration to honor Roger will be held in May at his home in Happy Jack, AZ. (Roger's wife Sue, has been a long time member of IRWA).





Arizona Kachina Chapter 28 Proudly Celebrates Its


# 50<sup>th</sup> Anniversary



This past September, Arizona's Kachina Chapter 28 celebrated its 50<sup>th</sup> Anniversary with their annual seminar. This year's theme "Looking Toward the Next 50 Years" was an outstanding success. Over 80 chapter members and guests attended the seminar at the Salt River Project's PERA Club Facility in Tempe, Arizona. Chapter President Doug Estes, SR/WA, MAI was the host for this event.

*Continued next page*

Article submitted to International by Mark Keller, SRP for the IRWA  
 "Right of Way" magazine as part of the 75th Anniversary addition. **Look out for it!!**



The seminar included timely topics covering ADOT's regional planning updates on the Phoenix Metropolitan Freeway System, Solana: World's largest proposed solar plant in Gila Bend, Arizona, Valley Metro Light Rail update for Phoenix metropolitan area, Creating Urban Form in terms of conventional zoning and Form-Based Codes, "The Power of Words" in communication, SRP's Cragin Dam Project and Water Outlook, and Arizona One: a Reality Check for Central Arizona Growth. Prior to the seminar, IRWA Educational Courses were held and included Course 200 Principles of Real Estate Negotiations and Course 400 Reviewing Appraisals in Eminent Domain.

During the course of this year's seminar, Kachina Chapter 28 recognized Employer of the Year, Professional of the Year, and Special Service Award. This year's recipients honored included Tierra Right of Way Services for 2008 Employer of the Year, Doug Estes, SR/WA, MAI as 2008 Professional of the Year, and Kathie Sholly, SR/WA and Kaye Bockmann, SR/WA as the Special Services Awards. The highlight of the day was the unannounced visit of International Right of Way's President, Faith Roland, SR/WA.

International Right of Way Association's President, Faith Roland, presented the 50<sup>th</sup> Anniversary Plaque to Chapter President, Doug Estes, SR/WA, MAI. A lot has happened during 50 years of the Kachina Chapter 28's history. In the early years from 1956 to 1957, Arizona Chapter 28, Crosby Holden served as the first chapter president. During the next several years, the Arizona Chapter 28 developed a set of by-laws under Garth J. Linkey who served as President during 1958-59 and also as International Right of Way President during 1968-69. At that time, Arizona's population was approximately 1,300,000 and the city of Phoenix was approximately 439,000. Gasoline was sold for \$0.30 per gallon. The Arizona Chapter 28 grew tremendously with the growth of Arizona and the Phoenix Metropolitan area. Notable projects in which Arizona Chapter 28's right of way professional members participated included the Central Arizona Project, completion of final leg of I-10 Freeway of Federal Highway Interstate System, Arizona Canal Diversion Channel Flood Control Project, and the Valley Metro Light Rail System. Countless other major roadway, utility, and relocation projects were supported with chapter members.

Currently, Arizona Chapter 28 is known as the Kachina Chapter 28. Our membership has included one International President, Region Chair and Vice-Chairs, international committee region representatives and at large members, Balfour Finalist, and 85 SR/WA's - one of the chapters with the highest number of SR/WA members. Ann Ortega served as the first woman president for Kachina Chapter 28 in 1976 and to date thirteen women have served as Kachina Chapter 28 President. For years, the chapter membership has been over 200 members. Our chapter was one of the first to develop a web site and assist with the development of Region One's web site.

The celebration included recognition of all past, current, and newly elected Chapter Presidents. Our seminar included eleven past presidents which include Gary Patchett, SR/WA, Paul Herndon, SR/WA, Doug Mc Laughlin, SR/WA, Sharon Joyce, SR/WA, Stan Seigal, SR/WA, Mark Keller, SR/WA, Mike Burns, SR/WA, Beverly Francy, SR/WA, Caroline Tillman, SR/WA, Chris Banks, SR/WA, and Jared Huish, SR/WA. Kathie Sholly, SR/WA was the incoming 2009 President and Doug Estes, SR/WA, MAI was the 2008 President.

Lastly, the list of sponsors is great and Kachina Chapter 28 is so fortunate to have financial and employers' support for all its members' activities in the chapter. The next 50 years hold tremendous promise for our chapter. The 2008 Arizona population stands at 6,500,000 with Phoenix's population at 1,552,259 and Metro Phoenix is approaching 3,500,000. A recent check of gasoline indicated an average price at \$3.09 per gallon and perhaps the need for the expansion of the new Valley Metro Light Rail as well as other forms of mass transportation in the Phoenix Metropolitan area will involve Kachina Chapter 28 members. Just think where the chapter will be in 2058 at the 100<sup>th</sup> Anniversary. Article submitted by Kachina Chapter 28 member Mark A. Keller, SR/WA.

Thanks Mark!







# 2009

## Education Schedule, Chapter 28

### March

C-900 Principles of Real Estate Engineering 03.25.09 - 03.26.09 at APS

C-901 Engineering Plan Development and Application 03.27.09 at APS

### July

C800 Principles of Real Estate Law 07-15 to 07-16-09 at APS

C802 Legal Aspects of Easements 07-17-09 at APS

### September Seminar

(Facilitator and Location TBD)

C-104 Standards of Practice for the Right of Way Professional

C-803 Eminent Domain Law

### October

Facilitator and Location TBD

SR/WA Review

## Some International Education Schedule for March/April - check website for more!!!

### SR/WA Study Review Session

SR/WA Review Study Session & Exam 03.23.09 Houston, TX

SR/WA Review Study Session & Exam 03.31.09 Panama City, FL

SR/WA Review Study Session & Exam 04.01.09 Downey, CA

### Basic Right of Way Disciplines

#### 100 - Principles of Land Acquisition

100 Principles of Land Acquisition 03.09.09 Atlanta, GA

100 Principles of Land Acquisition 03.09.09 Pearl, MS

100 Principles of Land Acquisition 03.17.09 Bellevue, WA

100 Principles of Land Acquisition 03.23.09 San Diego, CA

100 Principles of Land Acquisition 03.24.09 Portland, OR

100 Principles of Land Acquisition 04.07.09 Austin, TX

100 Principles of Land Acquisition 04.13.09 Sacramento, CA

#### 103 - Ethics and the Right of Way Profession

103 Ethics and the Right of Way Profession 03.13.09 Pearl, MS

103 Ethics and the Right of Way Profession 03.27.09 San Antonio, TX

103 Ethics and the Right of Way Profession 06.05.09 Austin, TX

103 Ethics and the Right of Way Profession 06.25.09 Indianapolis, IN

#### 104 - Standards of Practice for the Right of Way Professional

104 Standards of Practice for the R/W Professional 03.13.09 San Diego, CA

104 Standards of Practice for the R/W Professional 04.23.09 Tucson, AZ

104 Standards of Practice for the R/W Professional 04.24.09 Portland, OR

104 Standards of Practice for the Right of Way Professional TENTATIVE 05.02.09 AR

104 Standards of Practice for the R/W Professional 05.13.09 Houston, TX

104 Standards of Practice for the R/W Professional 09.14.09 Oklahoma City, OK

104 Standards of Practice for the Right of Way Professional TENTATIVE 05.14.10 St. Louis, MO

#### 105 - The Uniform Act Executive Summary

105 The Uniform Act - Executive Summary 04.06.09 Oklahoma City, OK

105 The Uniform Act - Executive Summary TENTATIVE 11.11.09 Bellevue, WA

### Appraisal

#### 400 - Principles of Real Estate Appraisal

400 Principles of Real Estate Appraisal 04.27.09 Cincinnati, OH

#### 401 - Appraisal of Partial Acquisitions

401 The Appraisal of Partial Acquisitions 03.09.09 Tucson, AZ

401 The Appraisal of Partial Acquisitions 03.30.09 Austin, TX

401 The Appraisal of Partial Acquisitions 04.13.09 Pearl, MS



# EDUCATION

# March, 2009



Sun	Mon	Tue	Wed	Thu	Fri	Sat	Schedule of Events
1	2	3	4	5	6	7	• Board Meeting at SRP or ASL @ 4.45pm!!
8	9	10	11	12	13	14	• Happy St. Patrick's Day!!!
15	16	17	18	19	20	21	• C-900 Principles of Real Estate Engineering
22	23	24	25	26	27	28	• C-901 Engineering Plan and Development
29	30	31					• Newsletter Articles Due!



Member meeting, lunch & Speaker is **Keith Russell**,  
**Maricopa County Assessor - April 7, 09!!!!**  
**@ The Old Spaghetti Factory!!**

1418 N. Central Avenue, Phoenix 11.30am ~1pm Cost: \$20.00

**\*\*Use the Light Rail!! Stops right in front, just before McDowell\*\***

Please note, seating is limited to **65 persons only!**

**RSVP today to confirm your seat!!!**

Remember, if you rsvp and don't show you could still be invoiced!!

Announcing the "new look" of International's website.

[www.irwaonline.org](http://www.irwaonline.org)

Feel free to email Chapter 28 President, Kathie Sholly  
 with any comments about the redesign.

[president@irwachapter28.org](mailto:president@irwachapter28.org)

**Experienced, Knowledgeable, Ethical**

**We are the IRWA**



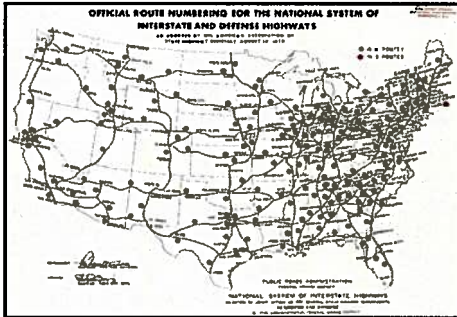
**Faith Roland, SRWA, President**





# IRWA Unveils Top 10 Projects!

To garner public awareness of the role of right of way professionals in bringing quality of life to communities everywhere, IRWA is celebrating its 75th Anniversary by recognizing the Top 10 North American infrastructure projects and the people who made them a reality. In 2008, members nominated more than 130 projects, and their Top 10 picks include this unique mix of projects. *Watch for IRWA's media coverage!*



**1 Interstate Highway System**  
Championed by President Eisenhower and authorized by the Federal-Aid Highway Act of 1956, it now spans more than 46,000 miles. Serving virtually all major U.S. cities, it is both the largest highway system in the world and the largest public works project in history.



**2 Florida's Turnpike Suncoast Parkway**  
Working green and incorporating state-of-the-art engineering, the parkway provides access to major cities while preserving existing landscape and wildlife. Part of Florida's Greenways and Trail System, construction included more than 446,000 square feet of bridge panels.



**3 Hoover Dam**  
It was the world's largest electric-power generating station and concrete structure when completed in 1935. With an original cost of \$49 million, its power output is estimated at four billion kilowatt-hours. It was designated a national historic landmark in 1985.



**4 Trans Alaska Pipeline**  
The 800-mile pipeline crosses three mountain ranges and countless rivers and streams to transport oil to the "lower 48" United States. Completed in 1977 at a cost of roughly \$8 billion, it has since transported over 15 billion barrels of oil.



**5 2nd Tacoma Narrows Bridge**  
Increased safety and accelerated commute time across four-lane bridge built in 1940s. First toll facility in western Washington in nearly two decades. Averages 40,000 eastbound trips per day and has raised nearly \$32 million in tolls during its first year.





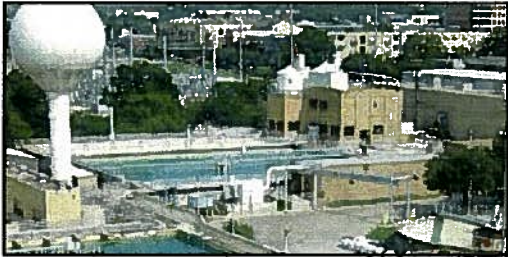
## 6 Confederation Bridge

The world's longest bridge built over ice-covered waters, it connects the Trans-Canada Highway between Prince Edward Island and New Brunswick, Canada. Known as the "Fixed Link," it spans 12.9 kilometer (8 miles), and provided a short-term economic boon for the Island.



## 7 METRO light rail project

METRO was formed as a nonprofit public corporation in 2002 by the cities of Phoenix, Tempe, Mesa and Glendale. The cities of Chandler and Peoria joined the Board in 2007, and Scottsdale joined the Board in 2008. METRO was created to plan, design, construct and operate the Valley's light rail transit system. METRO's incorporation followed six years of planning efforts and the approval by voters of several transportation tax initiatives at the municipal and county levels. METRO's Board of Directors is composed of representatives from the member cities. The 20-mile METRO starter line has 28 stations. In addition to the starter line, there are 37 additional miles of extensions planned on a pay-as-you-go basis through the year 2025. METRO construction began in February 2005. The system opened for passenger service on Dec. 27, 2008.



## 8 Austin Clean Water Program

Consisted of 100 individual wastewater projects in Austin, TX, and was the city's second largest infrastructure project ever undertaken. Over 135,000 linear feet of sewer pipe was installed, and sewer overflows were reduced from 13 million gallons to 285,000 by late 2008.



## 9 I-10 Katy Freeway Expansion

Largest reconstruction program undertaken in Texas. The 30-year old freeway was originally designed for 79,000 vehicles per day. The freeway was widened to nearly 26 lanes, includes a multi-lane electronic toll way and can accommodate an average of 207,000 vehicles per day.



## 10 Golden Gate Bridge

Declared one of the modern Wonders of the World, it connects San Francisco to Marin County. Completed in 1937, nearly 83 tons of steel were used during construction, giving it the longest suspension bridge span in the world.

# Texas kills 50-year road building plan after outcry

Submitted by Mark Keller - Jan 6, 2009 2:09pm, composed by Joan Gralla

**NEW YORK, Jan 6 (Reuters)** - Texas has killed its 50-year, multibillion-dollar road-building plan after criticism that it would have wrested too much land from private owners and failed to focus on short-term needs, a state official said on Tuesday.

"The Trans Texas Corridor concept, as previously known and discussed, has been set aside," said Chris Lippincott, a spokesman for the state transportation department.

Lippincott, speaking by telephone, said that the state would pursue a revised plan that will focus on stand-alone projects, instead of the coordinated, \$150 billion effort that included utilities, freight and passenger trains in addition to new or expanded highways.

The scaled back plans meant the state would narrow the width of the corridor of land it would take from private owners for its road-building to 600 feet from 1,200 feet.

"The changes you saw today reflect the concerns we've heard about the breadth of the right of way we needed to acquire and the 50-year complex network of assets," he said.

The Trans Texas Corridor was the biggest U.S. road privatization program and a centerpiece of Republican Gov. Rick Perry's initiatives. Legislators feared that private developers would benefit at the expense of taxpayers and they had already barred Perry from signing more deals in some areas.

"I think people thought it (the program) was too aggressive," Lippincott said, adding residents wanted the state to focus more on near-term improvements.

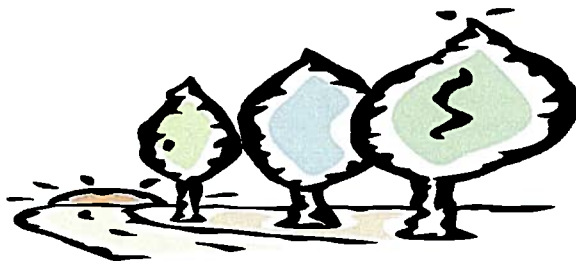
That legislature's two-year moratorium on new deals expires in the second half of this year and Lippincott said lawmakers are expected to consider the ban and what he called funding challenges when they return to session next week. "The money simply doesn't exist at the state or federal level to solve all our problems," he said. President-elect Barack Obama has made rebuilding the nation's infrastructure a crucial part of his economic stimulus plan and many governors, from California to New York, are already vying for dollars.

Investment banks have raised hundreds of millions of dollars to invest in infrastructure projects, and developers, long accustomed to doing deals overseas, are eager to launch projects in the United States.

The Texas state transportation department has been severely criticized for some of its privatizations, with a report by the legislative Sunset Advisory Commission, for example, in June recommending that the department should be put on a four-year probation.

Shortly after that report, Texas limited its expansion of Interstate 69 to existing roads as much as possible, instead of relying on the right of eminent domain to take land.

This project aims to give motorists more direct routes from Louisiana or Arkansas to Houston and south to the border with Mexico.





# Job Board



## Senior Right-of-Way Agent/Environmental Analyst

Location: San Diego County, La Mesa, CA

The Helix Water District has a position in which the incumbent has a significant role in a variety of professional and technical activities associated with the acquisition, management and disposition of right-of-way and fee property for waterworks facilities; and coordinates and participates in activities to ensure District compliance with applicable environmental regulations. This position requires six years of increasingly responsible real estate and/or right-of-way acquisition experience, including one year as a SRWA or equivalent.

Certification as a Senior Right-of-Way Agent (SRWA).

Salary: \$5,455 - \$6,963/ month (DOQ) with an excellent benefit package.

Please visit [www.hwd.com](http://www.hwd.com) for more information and application.

Closing Date: Open Until Filled

Anne Shogan; (619) 667-6263;  
[anne.shogan@helixwater.org](mailto:anne.shogan@helixwater.org)

## Senior Leader

URS are currently searching for a Senior Leader in their Transmission Power business unit in **Denver, CO**.

The ideal candidate is someone with a Seller/Doer background or mentality with a minimum of 10 years experience in permitting/sitting/ right of way or engineering project management for electric power transmission and distribution projects.

This position will manage multiple projects; manage proposals for power-related T&D efforts and direct project staff in this area of delivery. This individual has the potential to lead Power and Transmission delivery on either a regional or national level depending on the expertise they bring to the table.

If you know of somebody who may have interest in this opportunity please contact

Troy McLeland, URS

[Troy\\_mcleland@urscorp.com](mailto:Troy_mcleland@urscorp.com)

Ph: 303-740-3888

